

ASP-04D-4S Cleartalk Daisy Chain

Operating Manual

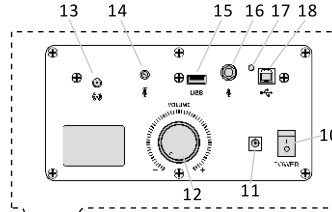


Please read this manual carefully before use

Equipment Overview

The Angekis ASP-04D-4S is a full audio communications system, ready for integration with almost any computer through USB connectivity. The Digital Active Loudspeaker functions as the Controller for the system, while 4 x wireless microphone Agents enable the system to cover a large audio pickup area. The system uses full duplex communication to enable natural conversational flow, and the Controller has a number of inputs and interfaces to meet a versatile range of meeting layouts.

Equipment Introduction



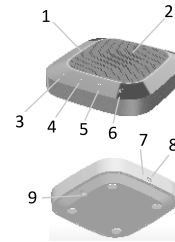
Loudspeaker Controller Rear Diagram



Loudspeaker Controller

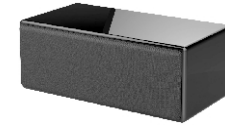
1. Agent status ring light
2. Built-in microphone
3. Horn mute key
4. Volume - key
5. Volume + key
6. Microphone mute key
7. Charging indicator
8. USB charging interface
9. Agent on/off button

10. Power switch
11. DC power input port
12. Volume adjusting knob
13. External antenna interface
14. External microphone gain adjustment
15. USB 5V power output port
16. 6.5mm microphone input port
17. Controller Indicator
18. Controller USB Data Interface
19. Controller Loudspeaker

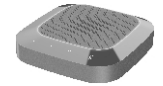


Wireless Microphone Agent

Packing List



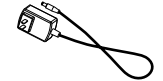
Loudspeaker Controller x1



Wireless Microphone Agent x4



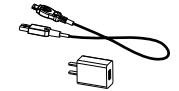
Controller Antenna x1



Controller Power Adapter x1



Controller USB Cable x1



Agent Power Adapter x4

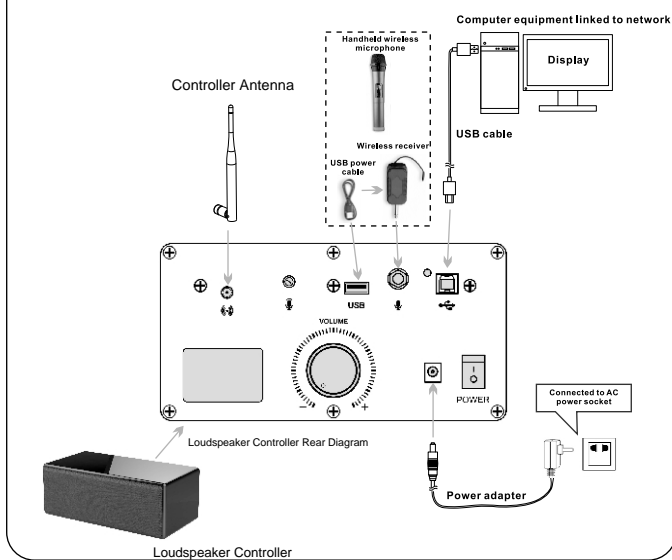


Operating Manual x1

Installation and Connection of Equipment

- As shown in the diagram of the Loudspeaker Controller, first install the external antenna, then connect the computer equipment via USB, then connect the power input port of the loudspeaker controller to the AC power socket with the power adapter. Turn on the power switch on the Controller device, and check that the Controller Indicator Light is green.
- Before use, the wireless microphone Agents should be connected to power via the included power adapters, and the batteries charged to full. While charging, the Agent Battery Indicator will turn orange, and the light will turn off when fully charged. When the Agent and Controller are wirelessly connected, the Agent will flash red when the battery is low.
- On the Wireless Microphone Agent, press and hold the on/off button for a moment until the green ring light turns on and stays on. This indicates that the Agent is connected to the Controller. If the green light is flashing, this indicates no connection to the Controller.
- The installation distance between the Controller and all Agents should be no more than 2 meters (6 feet), and the recommended installation distance between Agents shall be 1.5 meters (4.5 feet).

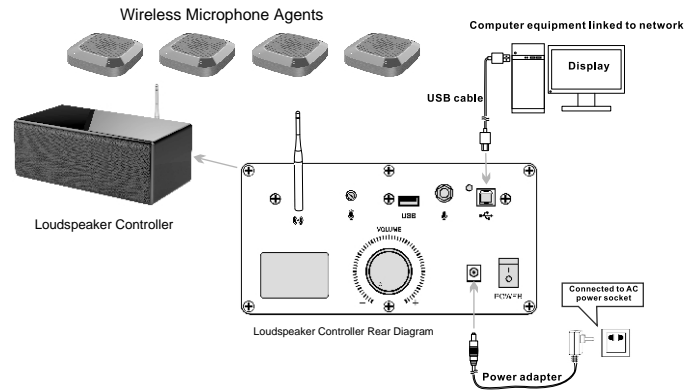
Connection and Installation Diagram of Equipment



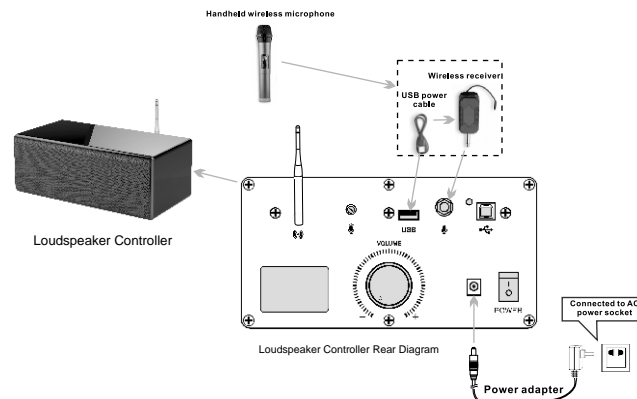
(3)

Operation Instructions

1. Main Application Connection Diagram of Net Conference Telephone



2. Connection Diagram of Sound Application in Local Classroom and Meeting Room



(4)

Operation Instructions

- According to the meeting application scenario and requirements for equipment installation, determine the best locations to place the loudspeaker controller and wireless microphone agents. Install the antenna on the loudspeaker, connect the loudspeaker to the computer, turn the volume knob to the minimum position, connect the power supply, and turn on the power switch. Check that the indicator light has turned green. The loudspeaker controller is now on standby mode.
- Press and hold the on/off button on each wireless microphone agent one by one. When the indicator light turns consistently green, it means the agent is connected to the controller.
- Communication between the local meeting room and the remote meeting room(s) should be established through your preferred communications service (such as Zoom, GoToMeeting, MS Teams, Google Hangouts, etc.) on the computer. Make sure to slowly adjust the volume of the loudspeaker and the input volume on the microphones when adjustments are necessary. Test the equipment before the meeting and again at the start of the meeting.
- During the call, you can press the "Loudspeaker Mute" button on the Agent device to mute the loudspeaker. The indicator light will turn solid red. You can press the "Loudspeaker Mute" button again to end the mute function and the indicator light will turn green.
- When the device is used as a loudspeaker in a classroom or conference setting, it can accept an external microphone with a 6.5mm plug. Please check the device diagram.

Note: This device has been tested for compatibility with Windows, Mac OS, and Linux operating systems. The USB interface adopts USB1.1, USB2.0 or above. The system does not require additional drivers and should work as a plug and play device.

Notes

- To avoid problems, please do not connect multiple audio devices to the host computer simultaneously. This system might suffer interference or other errors.
- Connect the USB cable of the loudspeaker controller directly to the computer host. The use of a USB hub may cause problems.
- After the device is successfully connected, the default device for playing (output) and recording (input) will display "Model of Local Device" in the sound and audio device properties of the control panel option of the computer host. Otherwise, "Model of Local Device" needs to be selected again for confirmation. Please check this setting.
- Keep the built-in battery of the equipment away from high temperatures and fire sources to minimize risk.
- Please do not try to repair the equipment yourself, as these devices require the skill of a trained professional. If there is a problem and the equipment needs to be repaired, please contact your dealer.

(5)